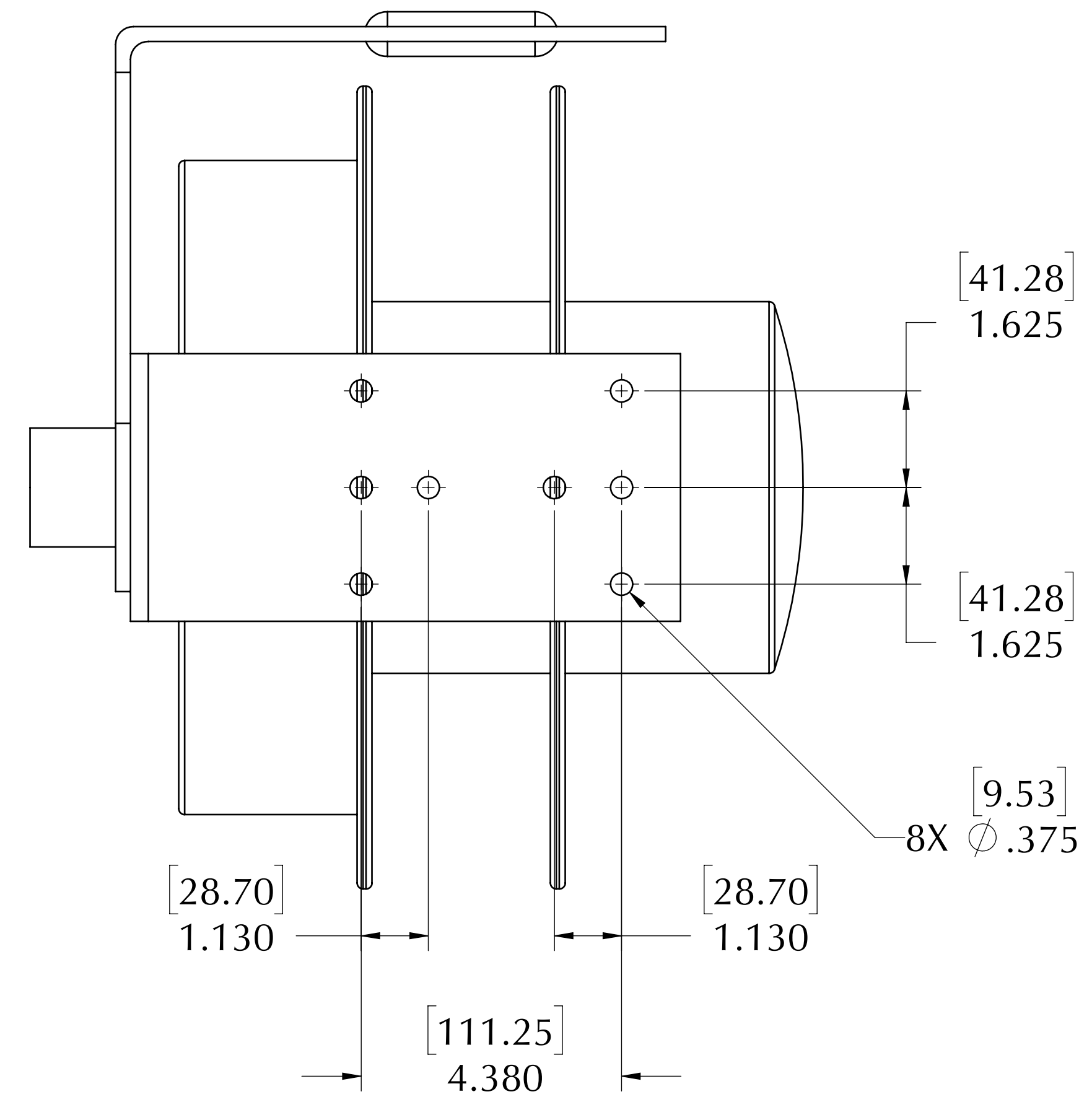
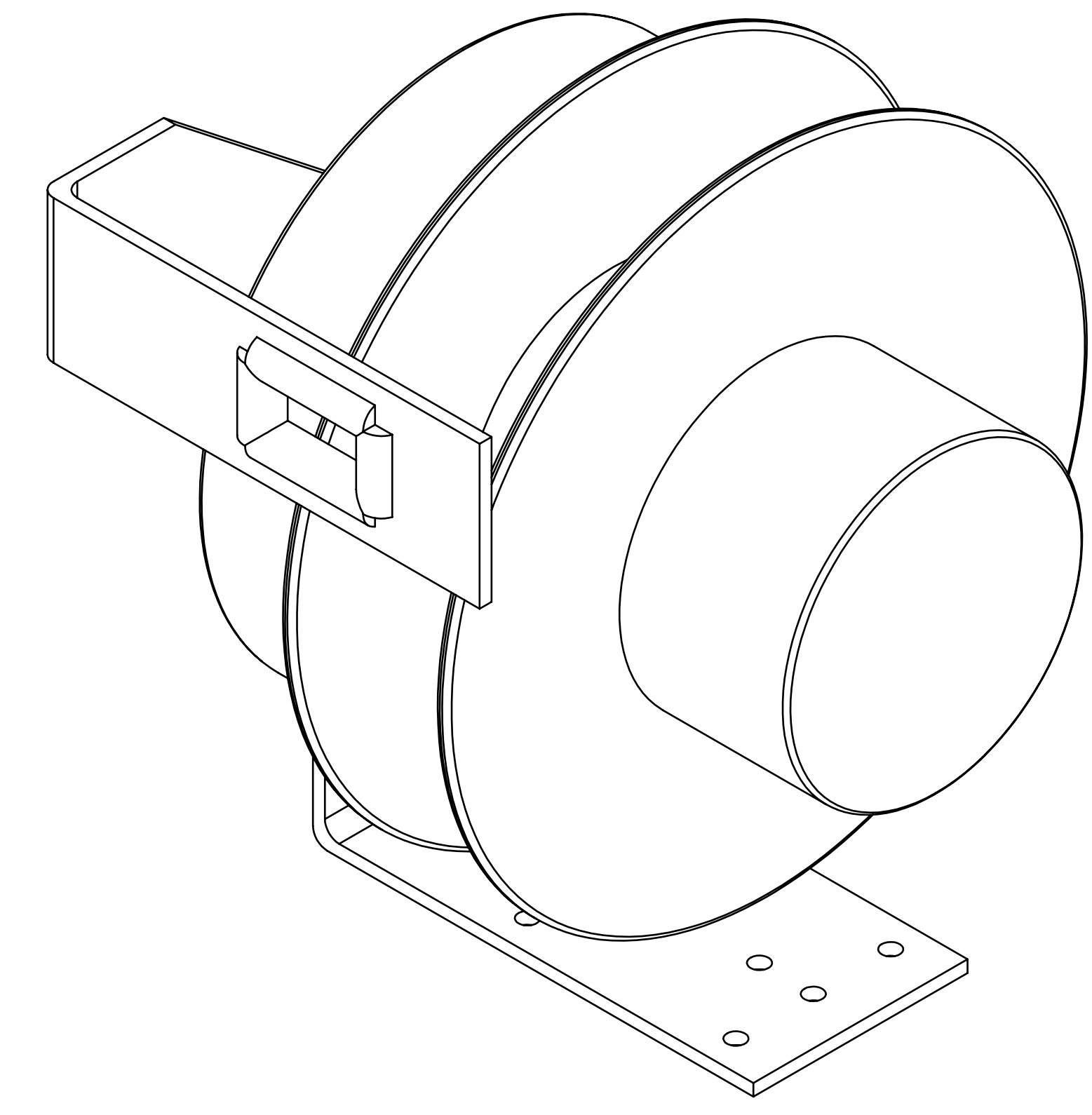
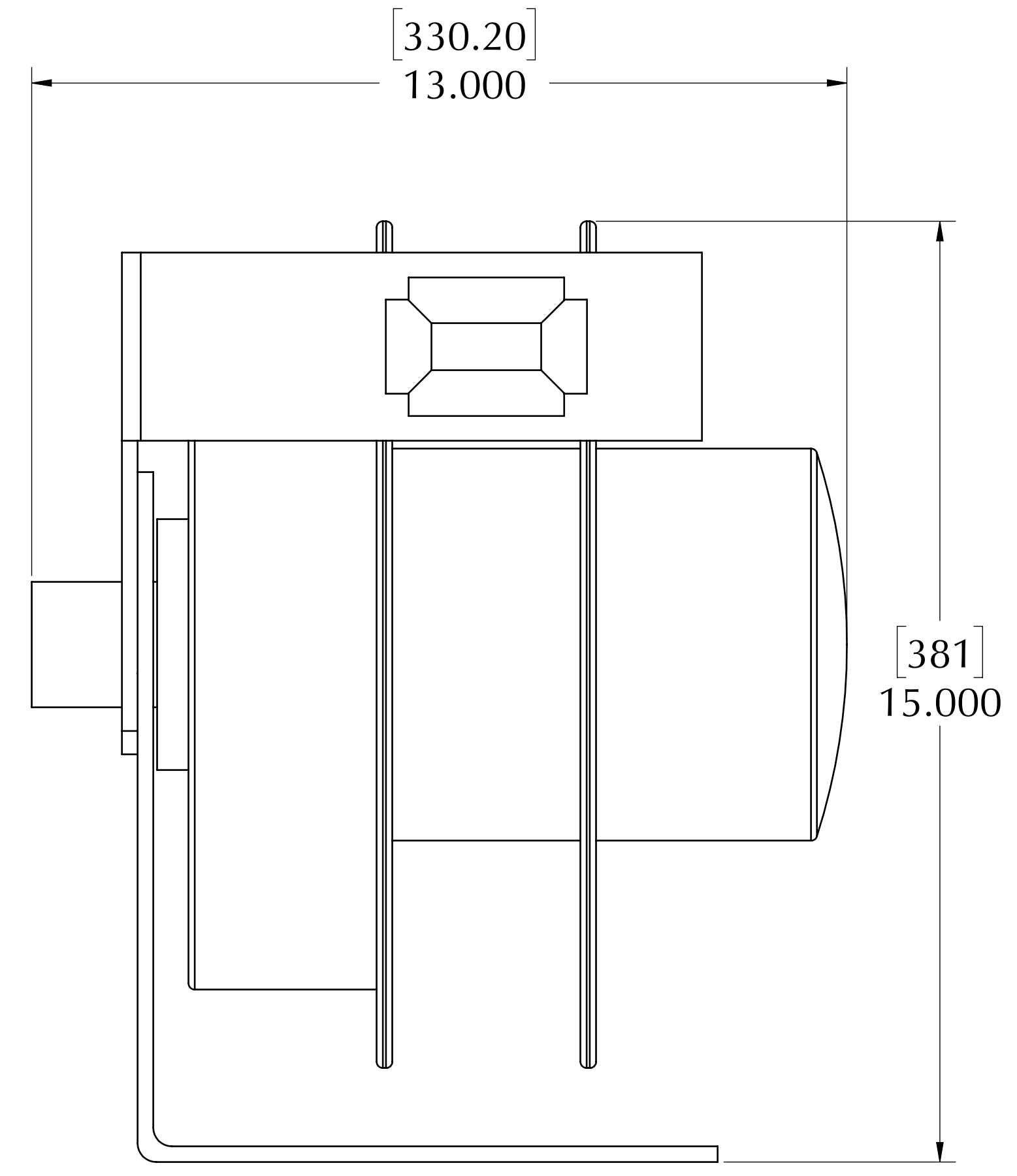
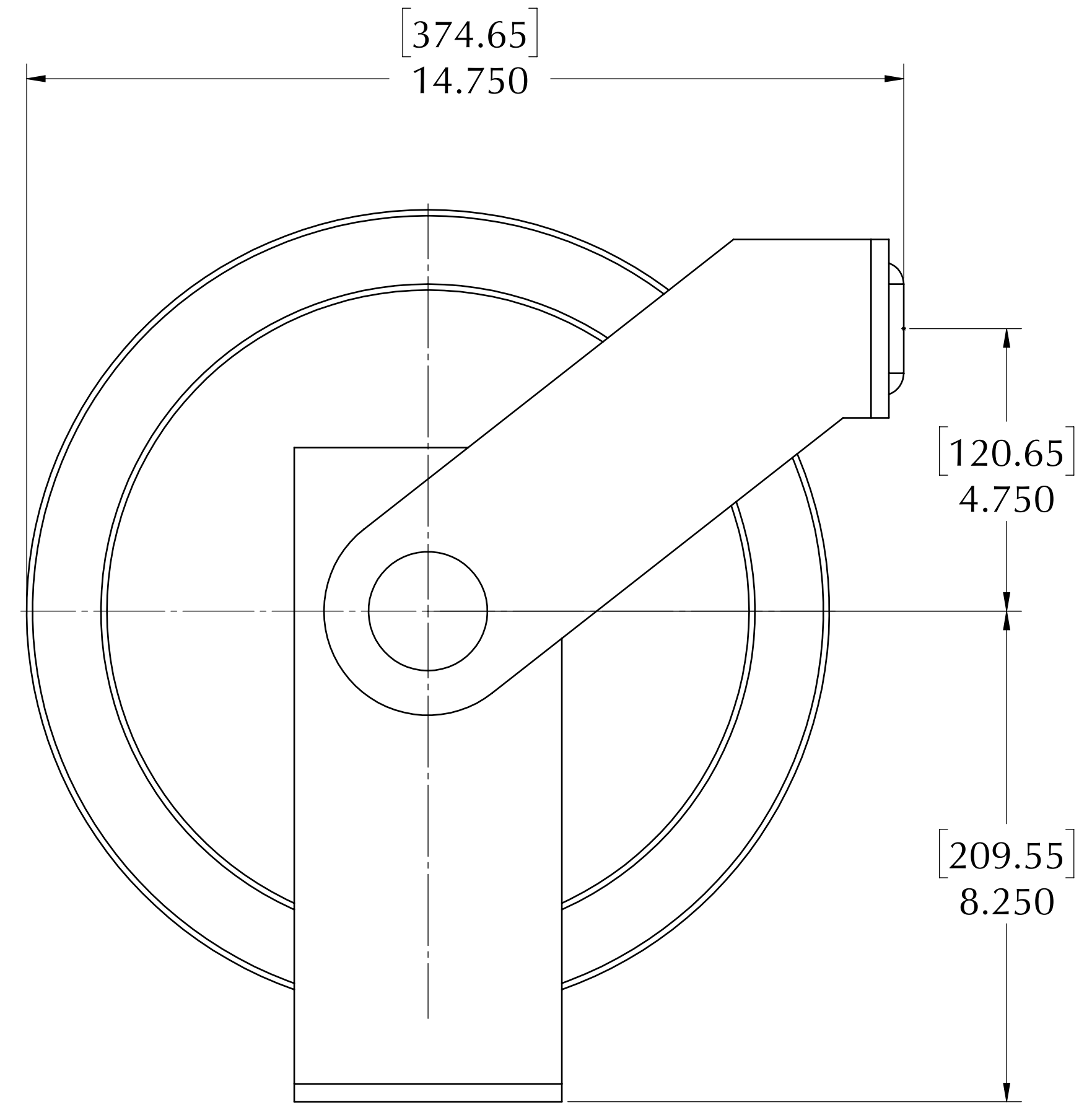



| REVISIONS | | | |
|-----------|-------------|------|----------|
| REV. | DESCRIPTION | DATE | APPROVED |
| | | | |

ELECTRICAL CABLE REEL



- NOTES:
1. STANDARD WIRE CONFIGURATION = 3 WIRE/15A
 2. OPTIONAL WIRE CONFIGURATION = 7 WIRE/15A
 3. SILVER BRUSHES AND RINGS FOR LONG LIFE
 4. TRAVEL DISTANCE = 30' (9.1 m)

| | | | |
|---|-------------|---------------|---|
| <small>UNLESS OTHERWISE SPECIFIED DIMENSIONS ARE IN INCHES</small> TOLERANCES: FRACTIONAL ± 1/32 ANGULAR ± 2° DECIMAL .XX ± 0.05 .XXX ± 0.10 | APPROVALS | DATE | DYNAPAC ROTATING CO. SALT LAKE CITY, UTAH  |
| | DRAWN | | |
| | CHECKED | | |
| | ENG. APPR. | | |
| MATERIAL Plain Carbon Steel | APPLICATION | SIZE DWG. NO. | REV |
| FINISH | FINAL ASSY | D 689415 X-04 | 1 |
| SCALE: 1:2 | | SHEET 1 OF 1 | |

PROPRIETARY AND CONFIDENTIAL
 THE INFORMATION CONTAINED IN THIS DRAWING IS THE SOLE PROPERTY OF DYNAPAC ROTATING CO., INC. ANY REPRODUCTION IN PART OR AS A WHOLE WITHOUT THE WRITTEN PERMISSION OF DYNAPAC ROTATING CO., INC. IS PROHIBITED.
 © COPYRIGHT DYNAPAC ROTATING CO., INC. ALL RIGHTS RESERVED